

CADC Administration Office  
 722 Gaunt St., Benton  
 Phone: 501.778.1133  
 Fax 501.778.9120  
[www.cadc.com](http://www.cadc.com)

CADC IS:  
 A Community Action Agency  
 An Equal Opportunity Employer  
 A United Way Agency

**Calhoun County**

*Hampton (71744)* 210 S. Lee 870.798.2457

**Clark County**

*Amity (71921)*  
 Head Start 213 N. Clark 870.342.5358

**Arkadelphia (71921)**

Community Dev. 1311 N. 10th St. 870.403.0679

Head Start 301 N. 23<sup>rd</sup> St. 870.246.8931

Fam/HEAP/SPS 301 N. 23<sup>rd</sup> St. 870.246.8089

Senior Center 1311 N. 10th St. 870.246.9871

Transportation 1311 N. 10th St. 870.246.8747

**Gurdon (71743)**

Senior Center 410 E. Main 870.353.2095

Head Start 410 E. Main 870.353.6616

**Columbia County**

*Magnolia (71753)* 1503 North Vine 870.234.6444

**Dallas County**

*Fordyce (72742)* 410 E. 4th St. 870.352.8894

**Hot Spring County**

*Bismarck (71929)*  
 Head Start 2078 Arlie Moore 501.865.1882

*Magnet Cove (72104)*  
 Head Start 21977 Hwy. 51 501.332.6906

*Malvern (72104)*  
 Head Start 1735 E. Sullenberger 501.337.1502

Operations/HEAP 1303 S. Main 501.332.5426

Senior Center 1800 W. Moline 501.332.5374

Transportation 830 W. Moline 501.332.6215

Fam/Com Dev/SPS 1735 E. Sullenberger 501.337.8401

**Lonoke County**

*Lonoke (72086)* 117 S.E. Front St. 501.676.0019

**Montgomery County**

*Mount Ida (71957)*  
 Head Start/HEAP 156 Senior Dr. 870.867.3722

Senior Center 158 Senior Dr. 870.867.2313

Transportation 112 Hwy 270 W Ste.10 870.867.4666

**Pike County**

*Delight (71940)*  
 Head Start 611 Webb St. 870.379.2270

*Glenwood (71943)*  
 Head Start 747 Lakeshore Dr. 870.356.4780

Senior Center/HEAP 229 Betty St. 870.356.4212

*Kirby (71950)*  
 Fam/Com Dev/SPS 2614 Hwy 27 N 870.398.4243

*Murfreesboro (72086)*  
 Head Start 120 E. Court, Ste. B 870.285.3351

Senior Activity/HEAP 120 E. Court, Ste. A 870.356.2312

*Jacksonville (72076)* #2 Crestview Plaza 501-457-5621

*Little Rock (72209)* 5401 S. University Ave. 501.603.0909

*N. Little Rock (72116)* 3901 McCain Park Rd. 501.771.0745

Ste. 102

**Pulaski County**

*Camden (71701)* 313 Jefferson St. SW 870.836.3200

*Saline County*  
*Benton (72015)*  
 Fam/Com Dev/  
 HEAP/SPS 309 S. East St. 501.315.0885

Head Start 1600 Dixie 501.315.6456

Senior Center 210 Jefferson St. 501.315.0645

Transportation 408 W. Walnut St. 501.315.0800

*Bryant (72022)*  
 Senior Center 702 SW Fourth St. 501.847.0809

*Harmony Grove (72015)*  
 Head Start 115 School Dr. 501.776.1697

*Paron (72122)*  
 Head Start 16494 W. 12th St. 501.594.5668

*Shannon Hills (72002)*  
 Head Start 11925 Co. Line Rd. 501.455.4932

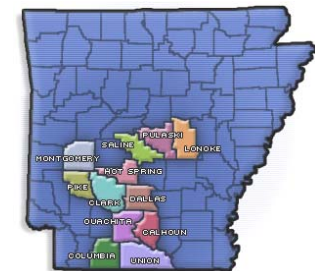
**Union County**  
*El Dorado (71730)* 1426 NW Avenue 870.864.0067

**Southern Region Transportation (SCAT)**  
*Calhoun, Columbia, Dallas, Ouachita, & Union Counties*  
*Camden (71730)* 313 Jefferson St. SW 870.836.3200

# CADC Community Participation



## Central Arkansas Development Council



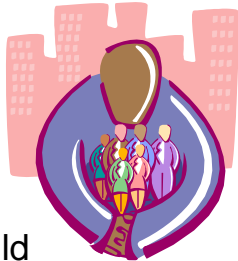
Building Futures  
 Through  
 Community Action  
[www.cadc.com](http://www.cadc.com)

CADC provides services in 12 counties in Arkansas. Contact any of our local offices for more information about the programs and services offered in your area.

CADC provides an opportunity to develop skills in leadership, non-profit governance, and building the capacity of your community.

### Who Should Participate?

Persons who want to develop their skills, abilities, and experience to mobilize the capacity of the community should participate.



### Why Should You Participate?

Residents are the engine that brings about community improvement. Individuals working independently and collectively form the fabric of a vibrant community.

### What Does it Cost?

There is not a cost for CADC's technical assistance, but you must be willing to invest your time and commitment to making it work.

## What You Will Learn About from Community Participation

- ◆ Community Focus Meetings
- ◆ Leadership Development
- ◆ Community Organizing
- ◆ Strategic Planning
- ◆ Developing Budgets
- ◆ Developing Timelines
- ◆ Project Planning
- ◆ Basic Principles of Asset-Based Community Development
- ◆ Understanding Group Dynamics / Group Decision Making
- ◆ 501(C) 3
- ◆ Grant Writing



*CADC complies with Title VI and VII of the Civil Rights Act*

## Contact a Community Development Specialist

### Calhoun County / Union County

1426 Northwest Ave., El Dorado, AR  
870-864-0067

### Clark County / Dallas County

1311 N. 10th St., Arkadelphia, AR  
870-246-9871

### Columbia County

1503 N. Vine St., Magnolia, AR  
870-234-6444

### Hot Spring County

1735 E. Sullenberger, Malvern, AR  
501-337-8401

### Lonoke County

117 SE Front St., Lonoke, AR  
501-676-0019

### Ouachita County

313 Jefferson St. SW, Camden, AR  
870-836-3200

### Pike County / Montgomery County

2614 Hwy 27 North, Kirby, AR  
870-398-4243

### Pulaski County

5401 S. University, Little Rock, AR  
501-603-0909

2 Crestview Plaza, Jacksonville, AR  
501-376-4119

### Saline County

309 S. East St., Benton, AR  
501-315-0885